

# OPX Operating Tables for Outpatient Departments and Operating Theatres Unique Flexibility and Reliability



**Catalogue No. 60  
Effective as of  
March, 2007**



# The range of Schmitz Operating Tables

---

**OPX Series 125**  
**Operating Tables with manual**  
**and hydraulic adjustments**

Page 4-7

---

**OPX mobilis<sup>®</sup> Operating Tables**  
**Features**

Page 8-9

---

**OPX mobilis<sup>®</sup> 200 – Operating Table**  
**of great manoevrability with**  
**manual and hydraulic adjustments**

Page 10-13

---

**OPX mobilis<sup>®</sup> 300**  
**Universal Operating Tables**  
**for all surgical disciplines**

Page 14-19

---

**OPX mobilis<sup>®</sup> RC**  
**Universal Operating Tables with remote**  
**control, satisfying high demands in surgery**

Page 20-25

---

**Positionings OPX mobilis<sup>®</sup> 300 and**  
**OPX mobilis<sup>®</sup> RC**

Page 26-29

---

**Accessory Kits suitable for different**  
**surgical disciplines**  
**Accessories**

Page 30-39  
The accessories are authorized for  
Schmitz operating tables only.  
There is no other purpose of use.

---

**Extension Device**  
**Positionings**

Page 40-43



**1**

**2**

**3**

**4**

**5**

**6**

**7**

**8**

# OPX Series 125 Operating Tables for Surgeries and Outpatient Departments CE

## Standard equipment

X-ray permeable table top; integral foam pad, antistatic. Back section as well as complete table top adjustable by means of gas springs. Table frame construction of stainless steel, column and base with stainless steel panelling; side rails 10 x 25 mm on both sides of table top for attachment of accessories. Cassette slot. Outstanding accessibility for X-ray amplifier (C-arm). Seat section with cut-out for gynaecological operations.

**Please consider head and leg sections as basic accessories!**



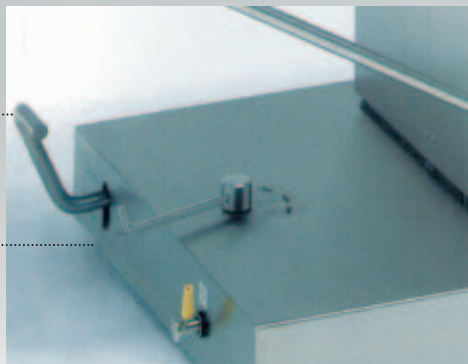
X-ray permeable table top, cassette slot (Use of cassette slot with head rest no. 101.248 only!)

Combined pair of grip handles for adjustment of the back section and Trendelenburg position

Foot pump for height adjustment

Mobile base, central brake by foot pedal.....  
(Model Nos. 125.111 and 125.211)

Control valve for lateral adjustment and high/low  
(Model No. 125.211)



Integral foam pads,  
antistatic



Cover, casing and frame  
made of stainless steel  
and easy to clean

**Model No. 125.110 illustrated  
with head rest 101.250,  
connecting piece 101.256  
and leg section 101.209**

# OPX Series 125



## Description



### **OPX Series 125 Model No. 125.110**

Hydraulic height adjustment by means of foot pump. Servo-assisted adjustment of back section as well as of Trendelenburg/Reverse Trendelenburg position. Base plate with 4 levelling feet. **Without head and foot section.**

### **OPX Series 125 Model No. 125.111**

Same version as no. 125.110, but mobile with central brake, castors resistant to abrasions.

### **OPX Series 125 Model No. 125.211**

With additional lateral adjustment by means of foot pump and switching valve. Mobile with central brake.

**Without head and foot section.**



### **Head rest Model No. 101.248**

comfort version, servo-assisted tilting, detachable, with cassette slot



### **Head rest Model No. 101.250**

(allow for connecting piece 101.256)



### **Shaped head rest Model No. 101.254**

antistatic pad  
(allow for connecting piece 101.256)



### **Connecting piece Model No. 101.256**

double-joint adjustment, stainless steel, for head rest 101.254 resp. head plate 101.250



### **2 Section leg section Model No. 101.214**

separate detaching and servo-assisted tilting



### **Leg section Model No. 101.209**

one-piece version, servo-assisted tilting, detachable

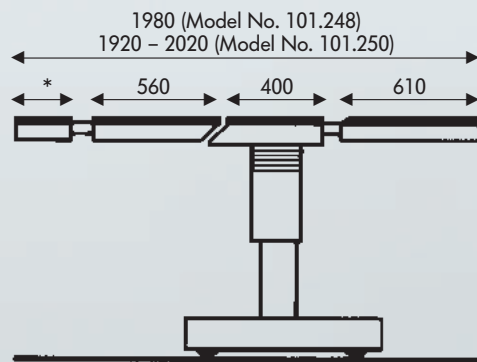
Further accessories available on pages 32 – 41

# Technical Data Positionings



## Technical data

Base plate, (L x W)	760 x 520 mm
Width of table top	500 mm
Height adjustment	760 - 980 mm
Lateral adjustment (Model No. 125.211 only)	22° each side
Trendelenburg	28° max.
Reverse Trendelenburg	23° max.
Back section	+60°/-22° max.
Leg plate(s)	+10°/-80° max.
Net weight:	
125.110 w. head/leg sect.	165 kg
125.111 w. head/leg sect.	185 kg
125.211 w. head/leg sect.	190 kg
Nominal capacity	135 kg



\* Model No. 101.250 (250 - 350 mm)  
Model No. 101.248 (280 mm)



Endoscopy/Struma



Gynaecology/Urology



Trendelenburg



Rectal positioning



Reverse Trendelenburg



Treatment of all kind of fractures of the lower limbs



Kidney position/Thorax surgery



(in connection with the extension device no. 101.516)

# OPX mobilis® Operating Tables

## Even more Functions and Great Mobility



Remote Control Units

### Mobile base

Four easy-glide double castors with cap. Central brake and spring-loaded directional castor to be activated by foot pedal (OPX mobilis 200 excepted).

### Remote Control

With key to activate electro-hydraulic pump, LED indicator for function set via the preselectors (300 CE and CLE models) or one-touch activation of desired table movement (RC models). Remote control unit contains battery control indicator as well as an activating key to prevent accidental table movements. The mobilis RC models also have a O-position key resetting the table top to its starting position and a reverse-mode key shifting remote control functions when the patient has been positioned in inverted way.

### Preselection of table movements

Setting of positions via the preselector pins before activating hydraulic by remote control (E models) or foot pedal. The RC models may be operated independently from the preselector only by using the remote control unit.

### Longitudinal displacement (L models)

of the table top up to 250 mm (300 CL, 300 CLE and RC 30 L as well as corresponding G models)

### Integrated kidney/body elevator (G models)

Setting of this function via the preselector and activating of foot pedal for desired elevation (100 mm max). In its starting position, the table top is a plane one.

### Foot switch (as optional accessory)

for RC models to achieve the positions high/low, Trendelenburg/Reverse Trendelenburg. Activating key. "Reverse-Mode key" for patients to be positioned in inverted way.

### Battery charger

for electro-hydraulic tables. Charging time: approx. 8 hrs, small and handy execution, resistant to damages; standard plug socket with inserted mains cable. Conservation charging of batteries



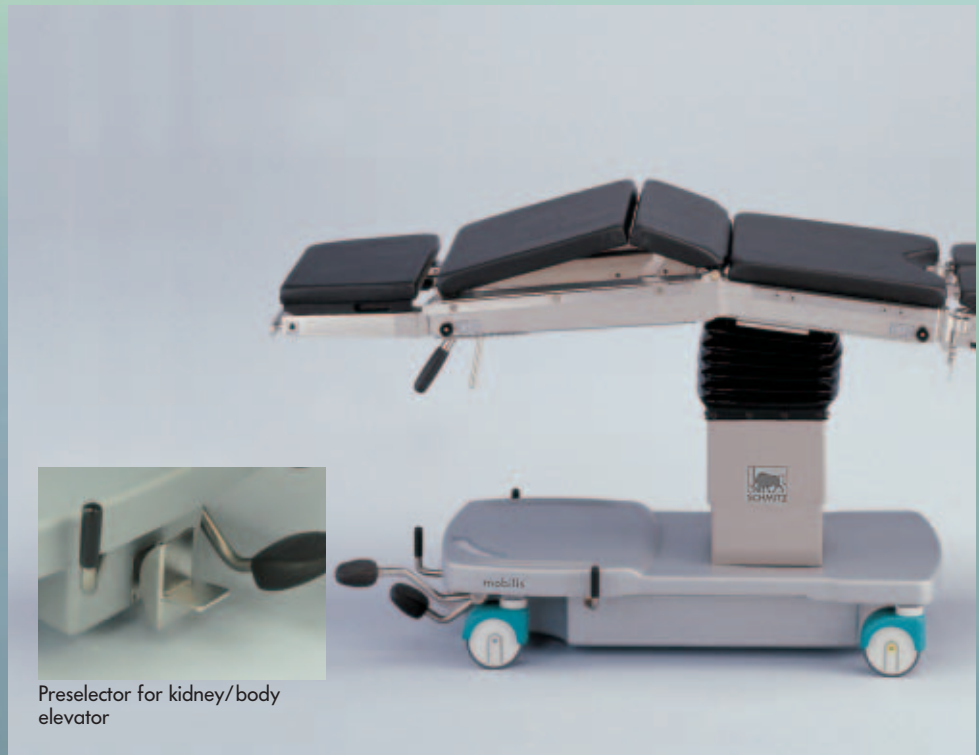
Mobile base



Preselector



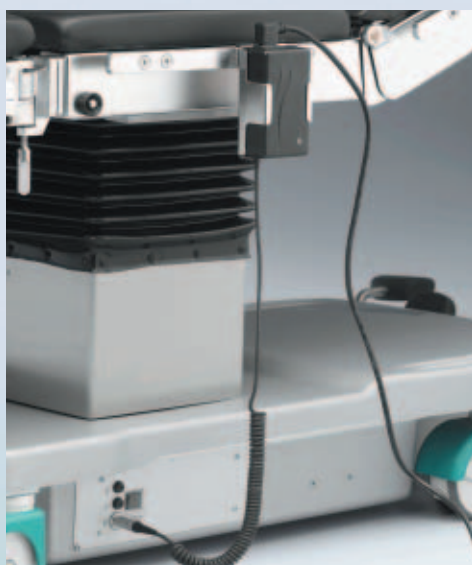
Foot switch



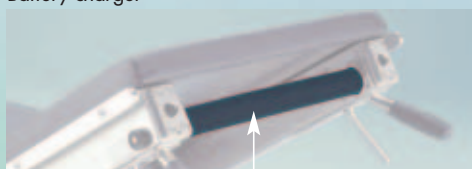
Preselector for kidney/body elevator

Integrated kidney/body elevator





Battery charger



Option: carbon bar, X-ray permeable

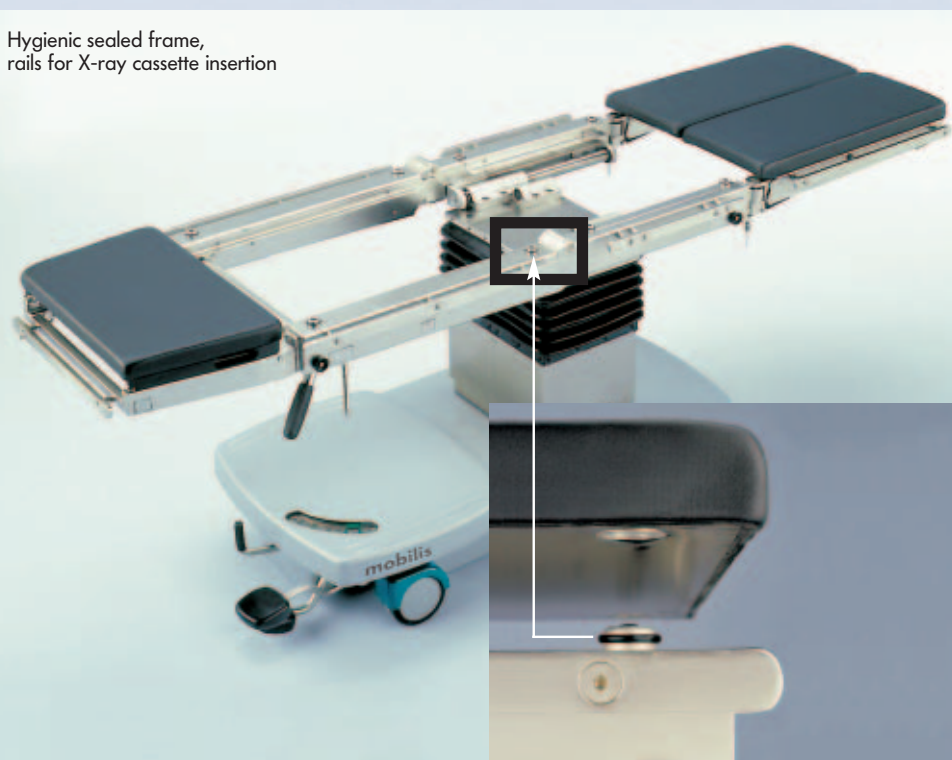


One-touch detachment of leg and head rest

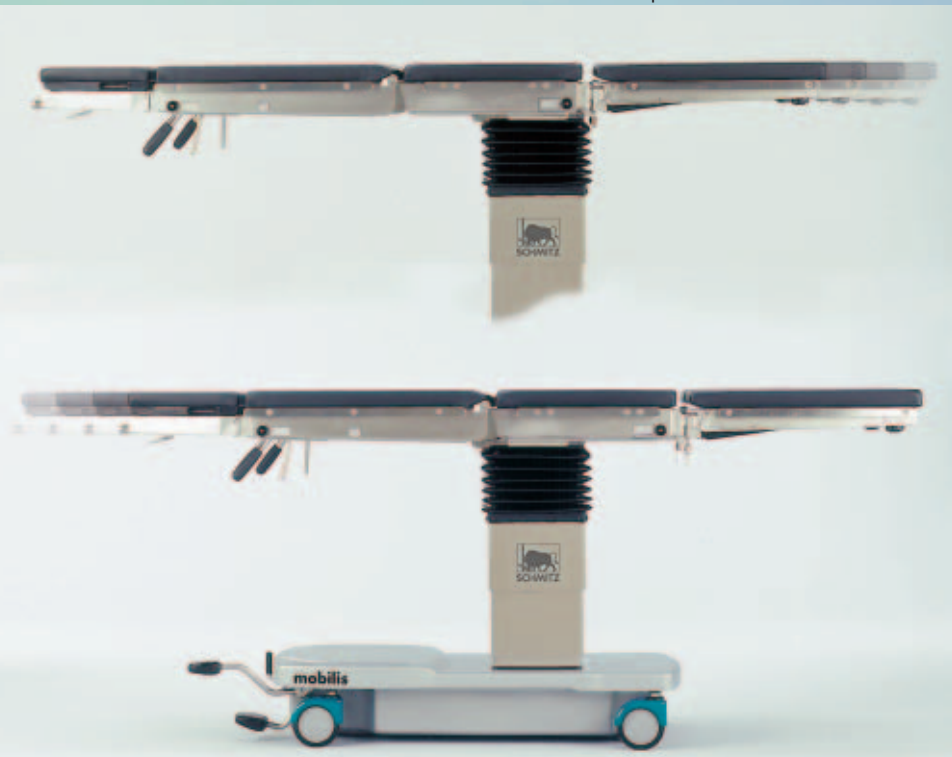


Castor with caps against fluids

Hygienic sealed frame,  
rails for X-ray cassette insertion



Attachment of the pads



Longitudinal displacement of table top (for L models only)

# OPX mobilis® 200

## Mobile and light-weight

### Operating Tables

CE



Smooth pads, detachable,  
impermeable to fluids  
and antistatic

Slot for X-ray cassette, radiolucent  
table top



Back section adjustment,  
servo-assisted

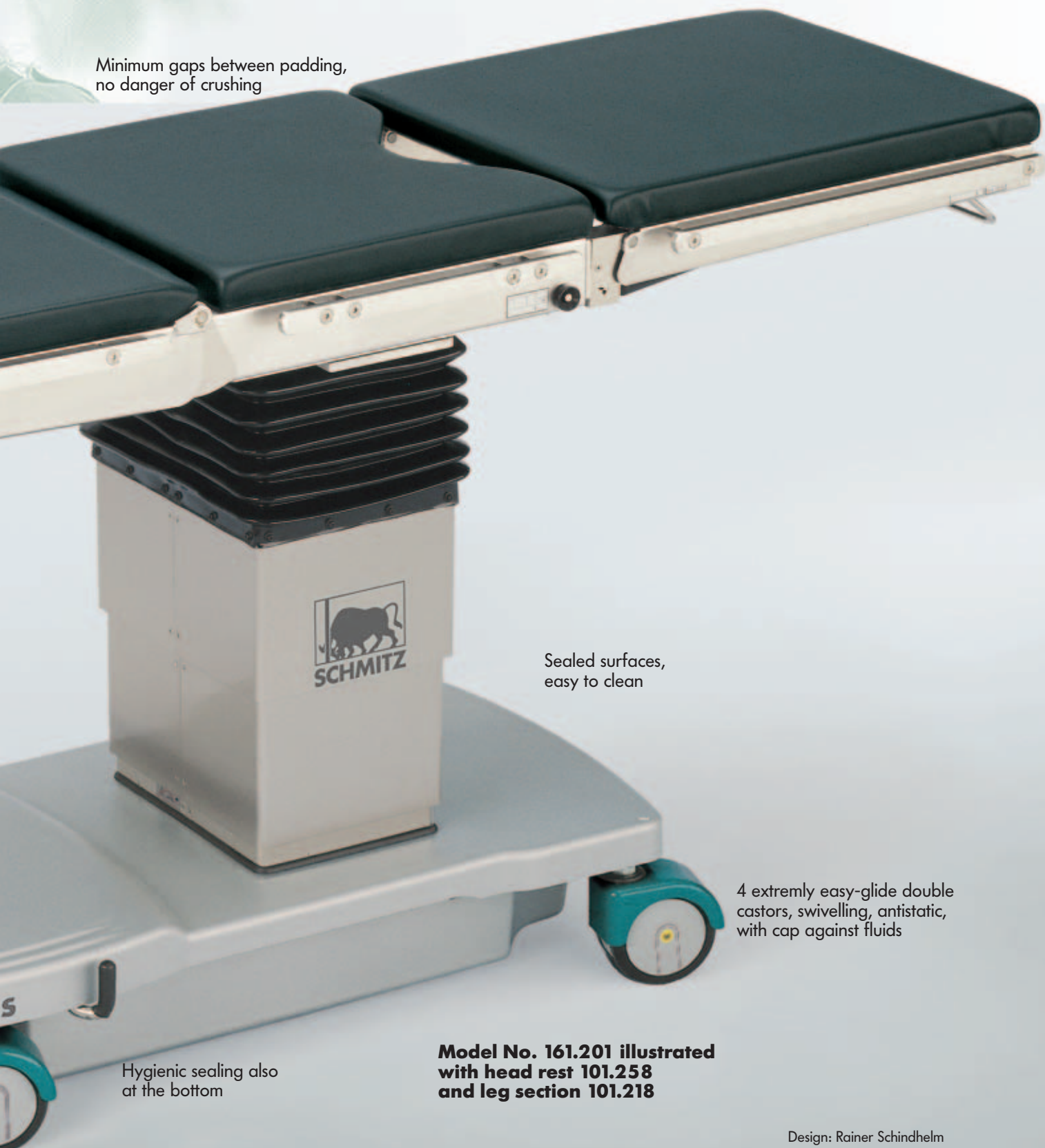
2 preselectors to select height  
or Trendelenburg adjustments

Pump lever for high/low and  
Trendelenburg adjustments

Pump level for central brake



Minimum gaps between padding,  
no danger of crushing



**3**

Sealed surfaces,  
easy to clean

4 extremely easy-glide double  
castors, swivelling, antistatic,  
with cap against fluids

Hygienic sealing also  
at the bottom

**Model No. 161.201 illustrated  
with head rest 101.258  
and leg section 101.218**

Design: Rainer Schindhelm

# OPX mobilis® 200 CE

## Description

### **mobilis® 200 Model No. 161.201**

Operating table with hydraulic foot pump for the following two movements:

– High/Low, – Trendelenburg/Reverse Trendelenburg

Two-part, radiolucent table top comprising:

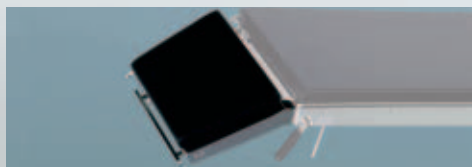
– Back section, – Seat section with cut-out for gynaecology

With servo-assisted adjustment of the back section. Integrated cassette slot. Antistatic special foam pads. Table frame construction of stainless steel, irradiated and electro-polished, disinfectant-proof. Side rails of stainless steel, 25 x 10 mm, on both sides of the table top for attaching accessories, column with stainless steel panelling. Mobile on four antistatic double-casters with cap against fluids, central brake by pump lever. Mobile base in shock-resistant plastic material, disinfectant proof.

**Please consider head and leg sections as basic accessories!**

### **mobilis® 200/G Model No. 161.205**

as model 161.201, but with integrated body/kidney elevator.



### **Head rest Model No. 101.258**

servo-assisted tilting, detachable



### **Head rest Model No. 101.259**

double-adjustment, servo-assisted weight compensation, detachable



### **2 Section leg section Model No. 101.217**

detachable, manual swivelling and servo-assisted tilting with weight compensation



### **Leg section Model No. 101.218**

one-piece version, servo-assisted tilting, detachable

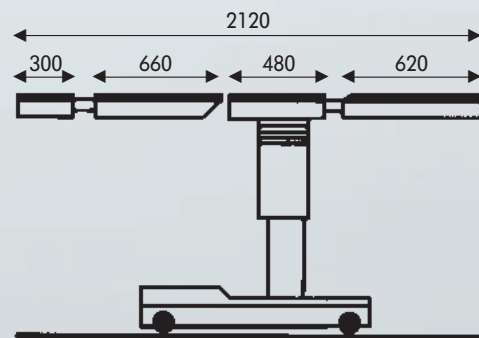
Further accessories available on pages 32 – 41

# Technical Data Positionings



## Technical data

Width of table top	540 mm
Total width	590 mm
Base plate	1120 x 580 mm
Diameter of the castors	125 mm
Height adjustment	720 - 1080 mm
Trendelenburg	30°
Reverse Trendelenburg	30°
Back section	+70°/-50° max.
Leg plate(s)	+20°/-90° max.
Head rest	+20°/-45° max.
Net weight, w. head/leg sect.	160 kg
Nominal capacity	135 kg
Maximum capacity in horizontal position	185 kg



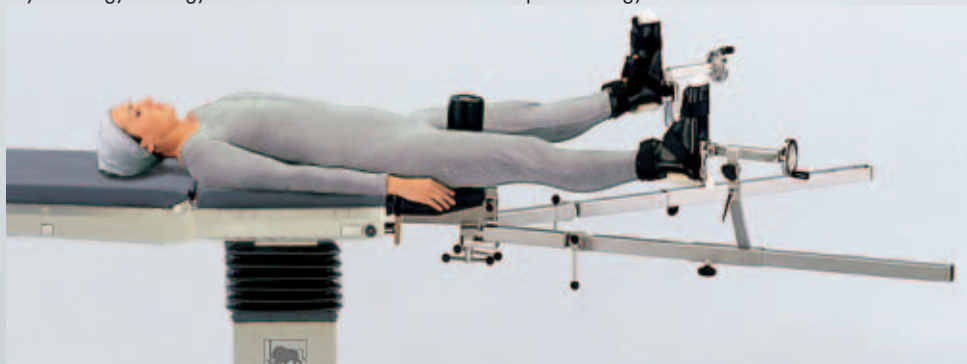
Gynaecology/Urology



ENT



Ophthalmology



Treatment of fractures of the lower limbs in connection with the extension device no. 101.521



Rectal positioning



Arthroscopy in connection with divided leg section no. 101.217

# OPX mobilis® 300 Mobile Universal Operating Tables CE



- Longitudinal displacement of the table top by up to max. 250 mm for optimal use of X-ray amplifier (300 CL, CL/G, CLE, CLE/G only)
- integrated kidney/body elevator for perfect patient positioning (G models only)

Minimum gaps between padding,  
no danger of crushing



Slot for X-ray  
cassette,  
radiolucent  
table top

Back section adjustment,  
servo-assisted

Sealed sur  
easy to

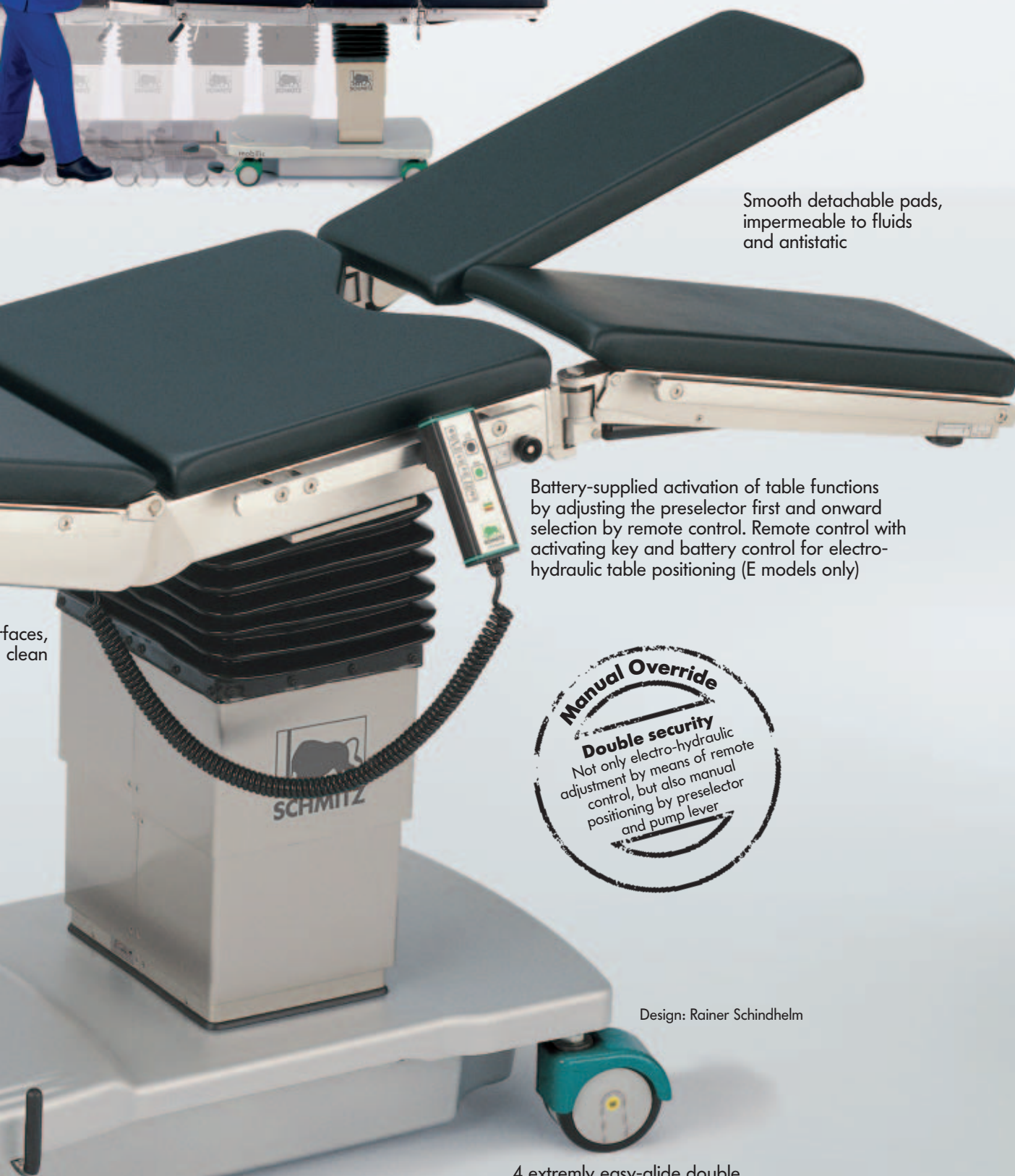
**Model No. 161.331  
illustrated with  
head rest 101.259 and  
leg section 101.217**

Preselector for high/low,  
lateral and Trendelenburg positions

Pump lever for high/low, lateral  
and Trendelenburg positions

Three-way pedal for straight forward movement,  
free swivelling of all castors, central brake





Smooth detachable pads,  
impermeable to fluids  
and antistatic

Battery-supplied activation of table functions  
by adjusting the preselector first and onward  
selection by remote control. Remote control with  
activating key and battery control for electro-  
hydraulic table positioning (E models only)

faces,  
clean

**Manual Override**  
**Double security**  
Not only electro-hydraulic  
adjustment by means of remote  
control, but also manual  
positioning by preselector  
and pump lever

Design: Rainer Schindhelm

1 spring-loaded  
directional castor for precise straight  
forward movement as well as exact turning on  
the spot, activated by three-way pedal

4 extremely easy-glide double  
castors, swivelling, antistatic,  
with cap against fluids

Hygienic sealing also at the bottom

# OPX mobilis® 300

## CE



### Description

---

#### **mobilis® 300 C Model No. 161.311**

Operating table with hydraulic foot pump for three different positionings:  
– High/Low, – Lateral (left/right), – Trendelenburg/ Reverse Trendelenburg  
Mobile on four double castors with cap, central brake and spring-loaded directional castor to be activated by foot pedal.  
**(w/o head and leg sections)**

#### **mobilis® 300 C/G Model No. 161.315**

as model 300 C, but with integrated kidney/body elevator.\*

---



#### **mobilis® 300 CL Model No. 161.321**

as model 300 C, but additionally with manual longitudinal displacement of table top by up to max. 250 mm, enabling optimized use of X-ray amplifier (C-arm) as well as enlarging the surgeon's working space with some positionings.  
**(w/o head and leg sections)**

#### **mobilis® 300 CL/G Model No. 161.325**

as model 300 CL, but with integrated kidney/body elevator.\*

---



#### **mobilis® 300 CE Model No. 161.331**

Operating table with hydraulic foot pump and additional electro-hydraulic pump for three different positionings: – High/Low, – Lateral (left/right), – Trendelenburg/ Reverse Trendelenburg. Setting of positions via the preselector pins and following activation by remote control unit.  
With rechargeable batteries, separate battery charger with mains cable, 230 V.  
Mobile on four double castors with cap, central brake and spring-loaded directional castor to be activated by foot pedal. **(w/o head and leg sections)**

#### **mobilis® 300 CE/G Model No. 161.335**

as model 300 CE, but with integrated kidney/body elevator.\*

---



#### **mobilis® 300 CLE Model No. 161.341**

as model 300 CE, but additionally with manual longitudinal displacement of table top by up to max. 250 mm, enabling optimized use of X-ray amplifier (C-arm) as well as enlarging the surgeon's working space with some positionings.  
**(w/o head and leg sections)**

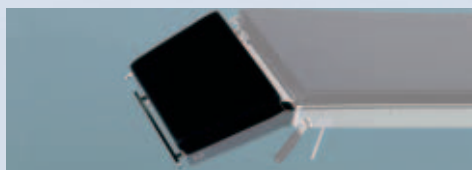
#### **mobilis® 300 CLE/G Model No. 161.345**

as model 300 CLE, but with integrated kidney/body elevator.\*



Description

---



**Head rest Model No. 101.258**

servo-assisted tilting, detachable

---



**Head rest Model No. 101.259**

double-adjustment, servo-assisted weight compensation, detachable

---



**2 Section leg section Model No. 101.217**

detachable, manual swivelling and servo-assisted tilting with weight compensation

---



**Leg section Model No. 101.218**

one-piece version, servo-assisted tilting, detachable

---

Further accessories available on pages 32 – 41

\* Integrated kidney/body elevator.  
Setting of this function via the preselector  
and activating of foot pedal for the  
desired elevation (max. 100 mm). In its  
starting position, the table top is a plane one.

# OPX mobilis® 300

## Technical Data

### Equipment

Technical Data	300 C 300 C/G	300 CL 300 CL/G	300 CE 300 CE/G	300 CLE 300 CLE/G
Overall length w/o head and leg sections	1,140 mm	1,140 mm	1,140 mm	1,140 mm
Overall length w/o head rest, with leg section	1,780 mm	1,780 mm	1,780 mm	1,780 mm
Overall length with head and leg sections	2,130 mm	2,130 mm	2,130 mm	2,130 mm
Width of table top	540 mm	540 mm	540 mm	540 mm
Total width	590 mm	590 mm	590 mm	590 mm
Base plate	all models: 1,120x580 mm			
Diameter of the castors	125 mm	125 mm	125 mm	125 mm
Height adjustment	720–1,080 mm	740–1,100 mm	720–1,080 mm	740–1,100 mm
Trendelenburg	30°	30°	30°	30°
Reverse Trendelenburg	30°	30°	30°	30°
Lateral adjustment (L/R)	+/-20°	+/-20°	+/-20°	+/-20°
Longitudinal displacement	–	250 mm	–	250 mm
Back section	+70/-50°	+70/-50°	+70/-50°	+70/-50°
Leg plate(s)	+20/-90°	+20/-90°	+20/-90°	+20/-90°
Swivelling of leg plate	55°	55°	55°	55°
Head rest	+25/-45°	+25/-45°	+25/-45°	+25/-45°
Tilt of head section pad	25°	25°	25°	25°
Net weight incl. head and leg sections	180 kg	190 kg	200 kg	210 kg
Nominal capacity (Maximum capacity in horizontal position)	135 kg 185 kg	135 kg 185 kg	135 kg 185 kg	135 kg 185 kg
Battery operation	–	–	■	■
External battery charger 90 – 264 V, 50 – 60 Hz	–	–	■	■

■ standard equipment

**Standard equipment:**

Two-part, radiolucent table top comprising:

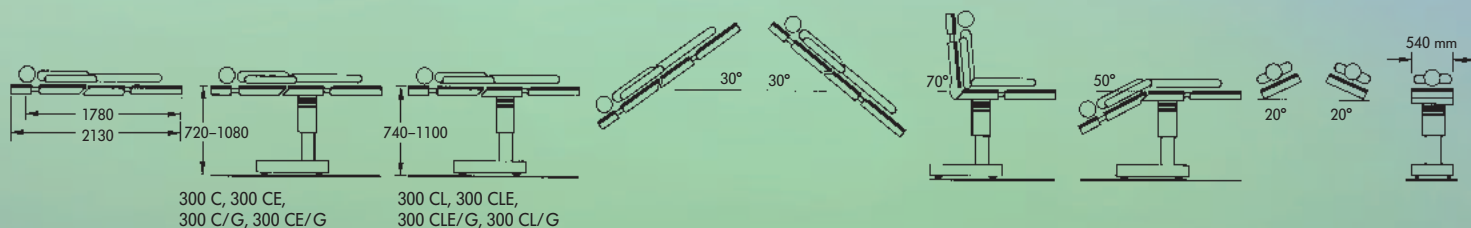
- Back section
- Seat section with cut-out for gynaecology

Hydraulic positioning:

- High/ Low
- Trendelenburg / Reverse Trendelenburg
- Lateral

Adjustment of hydraulic positions by preselector with indicator on the base and foot pump.

Servo-assisted adjustment of the back section. Integrated cassette slot. Special antistatic foam pads. Table frame construction of stainless steel, irradiated and electro-polished, disinfectant-proof. Side rails of stainless steel, 25 x 10 mm, on both sides of the table top for attaching accessories, column with stainless steel panelling. Mobile on four antistatic double-castors (125 mm) with caps against fluids, central locking by foot pedal action, 1 spring-loaded directional castor, activated by foot pedal. Mobile base in shock-resistant plastic material, disinfectant-proof.



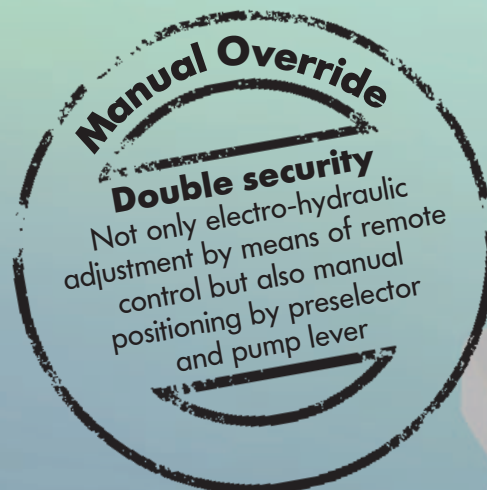
# OPX mobilis® RC Comfortable and Reliable Operating Tables for Major Surgery CE

**mobilis® RC 40**  
**Model No. 161.451**  
**illustrated with head rest 101.259,**  
**leg section 101.217**



### **Electro-hydraulic Back Rest**

Electro-hydraulic adjustment of the back section by remote control or manually by means of preselector and pump lever (mobilis RC 40 models only)



### **Three-way Pedal**

for straight forward movement, turning on the spot, free swivelling and central brake



**Remote Control:**  
One-touch adjustment  
of table movement,  
easy to clean and  
desinfectant-proof

**– Activating Key:**  
against accidental table  
movement

**– O-Position Key:**  
automatically returns the table  
top back to its starting position

**– Reverse-Mode Key:**  
shifting table functions over to  
reverse mode when the patient has  
been positioned in inverted way

**– Battery Control**



## Description

---

### **mobilis<sup>®</sup> RC 30 Model No. 161.351**

Universal Operating Table with electro-hydraulic adjustment by means of remote control for three different positionings: – High/Low, – Lateral (left/right) – Trendelenburg/Reverse Trendelenburg

All of these table movements may also be operated manually by hydraulic foot pump. Rechargeable batteries. External battery charger with mains cable 230 V. Mobile on four double castors with cap, auxiliary directional castor and central brake to be activated by foot pedal.

**(w/o head and leg sections)**

### **mobilis<sup>®</sup> RC 30/G Model No. 161.355**

as model RC 30, but with integrated body/kidney elevator.\*

---



### **mobilis<sup>®</sup> RC 30 L Model No. 161.361**

as model RC 30, but additionally with manual longitudinal displacement of table top by up to max. 250 mm, enabling optimized use of X-ray amplifier (C-arm) as well as enlarging the surgeon's working space with some positionings.

**(w/o head and leg sections)**

### **mobilis<sup>®</sup> RC 30 L/G Model No. 161.365**

as model RC 30 L, but with integrated body/kidney elevator.\*

---



### **mobilis<sup>®</sup> RC 40 Model No. 161.451**

Universal Operating Table with electro-hydraulic adjustment by means of remote control for four different positionings: – High/Low, – Lateral (left/right) – Trendelenburg/Reverse Trendelenburg, – Back section

All of these table movements may also be operated manually by hydraulic foot pump. Rechargeable batteries. External battery charger with mains cable 230 V. Mobile on four double castors with cap, auxiliary directional castor and central brake to be activated by foot pedal.

**(w/o head and leg sections)**

### **mobilis<sup>®</sup> RC 40/G Model No. 161.455**

as model RC 40, but with integrated body/kidney elevator.\*

---



### **mobilis<sup>®</sup> RC 40 L Model No. 161.461**

as model RC 40, but additionally with manual longitudinal displacement of table top by up to max. 250 mm, enabling optimized use of X-ray amplifier (C-arm) as well as enlarging the surgeon's working space with some positionings.

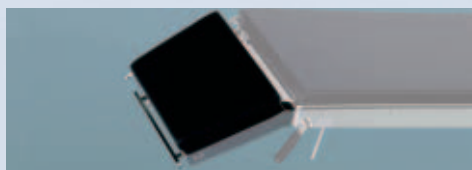
**(w/o head and leg sections)**

### **mobilis<sup>®</sup> RC 40 L/G Model No. 161.465**

as model RC 40 L, but with integrated body/kidney elevator.\*

Description

---



**Head rest Model No. 101.258**

servo-assisted tilting, detachable

---



**Head rest Model No. 101.259**

double-adjustment, servo-assisted weight compensation, detachable

---



**2 Section leg section Model No. 101.217**

detachable, manual swivelling and servo-assisted tilting with weight compensation

---



**Leg section Model No. 101.218**

one-piece version, servo-assisted tilting, detachable

---

Further accessories available on pages 32 – 41

\* Integrated kidney/body elevator.  
Setting of this function via the preselector  
and activating of foot pedal for the  
desired elevation (max. 100 mm). In its  
starting position, the table top is a plane one.

# OPX mobilis® RC

## Technical Data

### Equipment

Technical Data	RC 30 RC 30/G	RC 30 L RC 30 L/G	RC 40 RC 40/G	RC 40 L RC 40 L/G
Overall length w/o head and leg sections	1,140 mm	1,140 mm	1,140 mm	1,140 mm
Overall length w/o head rest, with leg section	1,780 mm	1,780 mm	1,780 mm	1,780 mm
Overall length with head and leg sections	2,130 mm	2,130 mm	2,130 mm	2,130 mm
Width of table top	540 mm	540 mm	540 mm	540 mm
Total width	590 mm	590 mm	590 mm	590 mm
Base plate	all models 1,120x580 mm			
Diameter of the castors	125 mm	125 mm	125 mm	125 mm
Height adjustment	720–1,080 mm	740–1,100 mm	720–1,080 mm	740–1,100 mm
Trendelenburg	30°	30°	30°	30°
Reverse Trendelenburg	30°	30°	30°	30°
Lateral adjustment (L/R)	+/-20°	+/-20°	+/-20°	+/-20°
Longitudinal displacement	—	250 mm	—	250 mm
Back section	+70/-50°	+70/-50°	+70/-50°	+70/-50°
Leg plate(s)	+20/-90°	+20/-90°	+20/-90°	+20/-90°
Swivelling of leg plate	55°	55°	55°	55°
Head rest	+25/-45°	+25/-45°	+25/-45°	+25/-45°
Tilt of head section pad	25°	25°	25°	25°
Net weight incl. head and leg sections	210 kg	220 kg	215 kg	225 kg
Nominal capacity (Maximum capacity in horizontal position)	135 kg 185 kg	135 kg 185 kg	185 kg 225 kg	185 kg 225 kg
Battery operation	■	■	■	■
External battery charger 90 – 264 V, 50 – 60 Hz	■	■	■	■

■ standard equipment



**Standard equipment:**

Two-part, radiolucent table top comprising:

- Back section
- Seat section with cut-out for gynaecology

Electro-hydraulic positioning:

- High/Low
- Trendelenburg / Reverse Trendelenburg
- Lateral
- Back section (RC 40 models only)

Manual Override:

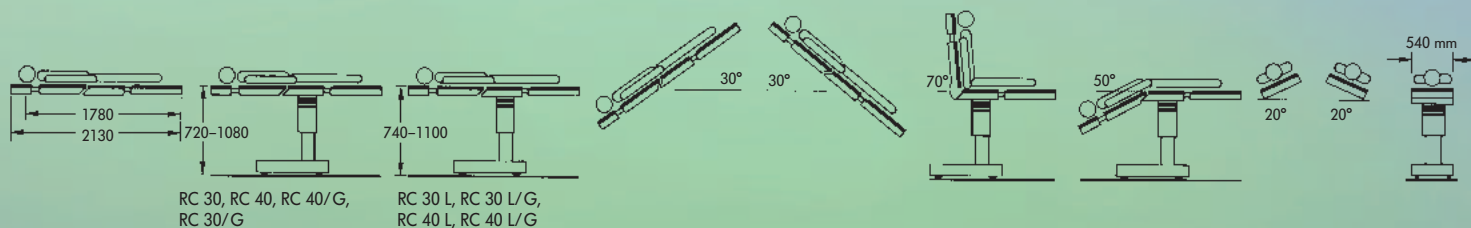
Manual hydraulic activation of table functions via preselector and pump lever.

Servo-assisted adjustment of the back section. Integrated cassette slot. Special antistatic foam pads. Table frame construction of stainless steel, irradiated and electro-polished, disinfectant-proof. Side rails of stainless steel, 25 x 10 mm, on both sides of the table top for attaching accessories, column with stainless steel panelling. Mobile on four antistatic double castors (125 mm) with caps against fluids, central locking by foot pedal action, 1 spring-loaded directional castor, activated by foot pedal. Mobile base in shock-resistant plastic material, disinfectant-proof.

Rechargeable batteries.

External battery charger with mains cable.

Note: The battery charger applies to voltages of 90 – 264 V/standard frequency of 50 – 60 Hz, with standard plug socket.



# OPX mobilis® 300, RC 30, RC 40 Positionings



Kidney and thoracic surgery



Nailing of the upper arm



Trendelenburg



Reverse Trendelenburg



Neurosurgery



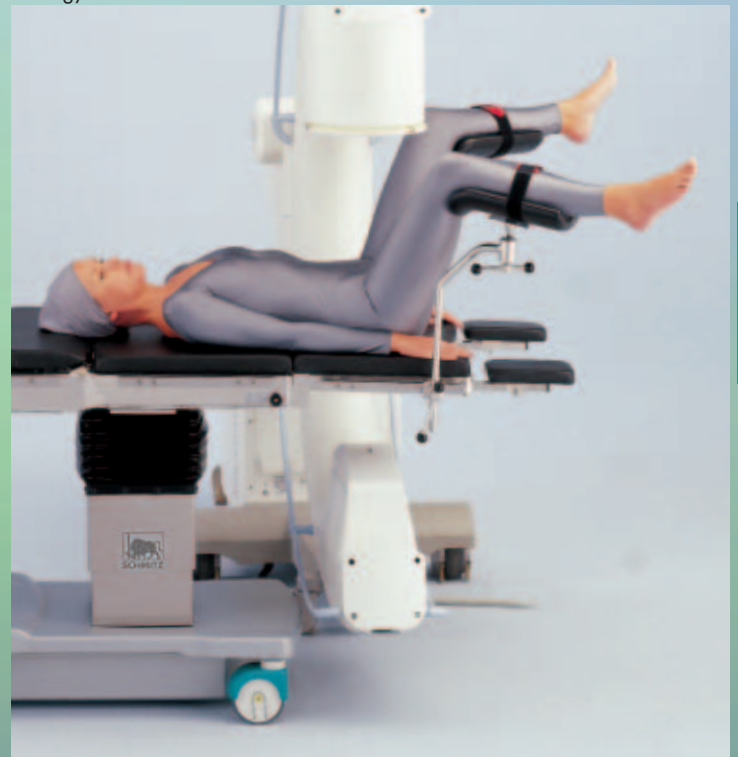
Arthroscopy



Urology



Neurosurgery



Urology

# OPX mobilis® 300, RC 30, RC 40 Positionings



Gynaecology



MIS/Gynaecology



Ophthalmology



Spinal surgery



Gall-bladder surgery



Percutaneous kidney stone surgery



ENT surgery



Positioning of obese patients in connection with set of extension pads no. 101.400



Shoulder arthroscopy



Cardiovascular surgery/ERCP



Accessory no. 101.279 + 101.280 + 101.273



Struma



Cardiovascular surgery

# Accessory kits suitable for different surgical disciplines

## OPX mobilis® Operating tables

### General Surgery

- 101.258 Head section
- 101.217 Leg section
- 101.103 Arm rest
- 101.121 Wristlet
- 101.127 Body restraint strap
- 101.142 Anaesthetic frame
- 101.144 Anaesthetic frame extension
- 101.122 Wristlet
- 2x 101.131 Bracket for body supports
- 2x 101.132 Shoulder/lateral support
- 2x 101.224 Leg support (Goepel type)
- 2x 101.367 Attachment clamp

### Gynaecology

- 101.258 Head section
- 101.217 Leg section
- 101.401 GYN adapting section
- 2x 101.224 Leg support (Goepel type)
- 2x 101.367 Attachment clamp  
alternative to 101.224 + 101.367:
- 101.229 Pair of leg supports  
(one-hand action)
- 101.240 Rinsing basin with attachment
- 101.157 Pair of shoulder supports
- 101.103 Arm rest
- 101.121 Wristlet
- 101.142 Anaesthetic frame
- 101.144 Anaesthetic frame extension
- 101.122 Wristlet

### Minimal invasive surgery/ Laparoscopy

- 101.258 Head section
- 101.217 Leg section
- 101.103 Arm rest
- 101.121 Wristlet
- 2x 101.125 Leg restraint strap
- 101.142 Anaesthetic frame
- 101.144 Anaesthetic frame extension
- 101.207 Foot rest
- 2x 101.131 Bracket for body supports
- 2x 101.132 Shoulder/lateral support
- 2x 101.224 Leg support (Goepel type)
- 2x 101.367 Attachment clamp  
alternative to 101.224 + 101.367:
- 101.229 Pair of leg supports  
(one-hand action)

### Urology/TUR

- 101.258 Head section
- 101.217 Leg section
- 101.601 Urological adapter
- 2x 101.224 Leg support (Goepel type)
- 2x 101.367 Attachment clamp
- 101.605 Basin with gyro flushing
- 100.184 Sieve  
alternative:
- 101.600 Deep drain basin
- 101.242 Sieve
- 101.602 Pair of elbow rests
- 101.157 Pair of shoulder supports
- 101.103 Arm rest
- 101.121 Wristlet
- 101.142 Anaesthetic frame
- 101.144 Anaesthetic frame extension
- 101.122 Wristlet
- 101.640 Foot switch (for OPX mobilis RC  
(models only))

### Kidney and Thorax surgery

- OPX mobilis G-models
- 101.259 Head section
- 101.217 Leg section
- 101.188 Semi-circular cushion
- 101.190 Cushion for prone position
- 3x 101.131 Bracket for body supports
- 2x 101.235 Back/buttock support
- 101.237 Pubis/sacrum/sternum support
- 101.103 Arm rest
- 101.127 Body restraint strap
- 101.142 Anaesthetic frame
- 101.144 Anaesthetic frame extension
- 101.122 Wristlet

### ENT/Struma/ Ophthalmology

- 101.252 Shaped head rest
- 101.274 Connecting piece
- 101.272 Universal adaptor
- 101.278 Shoulder plate
- 101.218 Leg section
- 2x 101.103 Arm rest
- 101.127 Body restraint strap
- 101.142 Anaesthetic frame
- 101.144 Anaesthetic frame extension

### Rectum surgery

- 101.258 Head section
- 101.218 Leg section
- 101.207 Knee/foot rest
- 101.179 Rectoscopy/ Buttock support
- 2x 101.367 Attachment clamp  
alternative to 101.207 & 101.179
- 2x 101.224 Leg support (Goepel type)
- 2x 101.367 Attachment clamp
- 101.157 Pair of shoulder supports
- 2x 101.103 Arm rest
- 101.142 Anaesthetic frame

### Adiposity surgery

- 101.258 Head section
- 101.217 Leg section
- 101.400 Extension plates  
(four-part set)
- 2x 101.103 Arm rest
- 101.127 Body restraint strap
- 101.142 Anaesthetic frame
- 101.144 Anaesthetic frame extension



**Traumatology (fracture treatment of the lower limbs)**

- 101.258 Head section
- 101.521 Extension device with basic accessories:  
2x extension bar supports  
2x foot plates for adults  
2x traction boots for adults  
1x leg plate  
1x countertraction post for dorsal position  
1x transport trolley for the extension device
- 101.545 1 countertraction post for lateral position
- 101.525 Receptacle for extension device (except L-models)
- 101.530 Pad
- 101.234 Basket for accessories
- 2x 101.130 Lateral support
- 101.103 Arm rest
- 101.142 Anaesthetic frame
- 101.122 Wristlet

**Fractures of the femur and neck of the femur, additional access.**

- 101.506 Kirschner wire device
- 101.224 Leg support (Goepel type)
- 101.367 Attachment clamp
- 101.547 Side rail elongation

**Traumatology (fracture treatment of the upper arm)**

- 101.258 Head section
- 101.218 Leg section
- 101.508 Upper arm positioning device
- 101.367 Attachment clamp
- 101.509 Countertraction post for upper arm
- 101.367 Attachment clamp
- 101.510 Weinberger hand traction device
- 101.507 Upper arm positioning plate
- 101.164 Attachment clamp
- 101.121 Wristlet
- 101.127 Body restraint strap

**Fractures of the lower legs, additional access.**

- 101.540 Positioning device for the lower leg
- 101.224 Leg support (Goepel type)
- 101.367 Attachment clamp
- 101.547 Side rail elongation

**Arm/Hand surgery**

- 101.258 Head section
- 101.218 Leg section
- 101.110 Arm/hand operating tables
- 101.103 Arm rest
- 101.121 Wristlet
- 101.127 Body restraint strap
- 101.142 Anaesthetic frame

**Spinal surgery**

- 101.258 Head section
- 101.218 Leg section
- 101.207 Knee/foot rest
- 101.179 Buttocks support
- 2x 101.367 Clamps
- 101.188 Semi-circular cushion
- 101.190 Cushion for prone position
- 2x 101.103 Arm rest
- 101.142 Anaesthetic frame

**Knee arthroscopy**

- 101.258 Head section
- 101.217 Leg section
- 101.185 Knee arthroscopy positioning device
- 101.125 Leg restraint strap
- 101.103 Arm rest
- 101.142 Anaesthetic frame
- 101.122 Wristlet

**Shoulder arthroscopy**

- 101.280 Head support
- 101.273 Connecting piece
- 101.279 Shoulder arthroscopy plate
- 2x 101.103 Arm rest
- 101.127 Body restraint strap

**Neurosurgery**

- 101.278 Shoulder arthroscopy plate
- 101.218 Leg section
- 101.563 Doro connecting piece
- 101.564 Doro Universal basic unit
- 101.565 Doro Skull Clamp
- 101.568 Doro shaped head rest
- 101.269 Cross-bar attachment
- 101.272 Universal adaptor
- 101.295 Carbon bar
- 2x 101.367 Attachment clamp
- 101.103 Arm rest
- 101.121 Wristlet
- 101.127 Body restraint strap
- 101.142 Anaesthetic frame

# Accessories for Operating Tables

## Arm rest 101.103

integral foam pad, 400 mm long, antistatic, with attachment strap 101.356, clamp 101.366, horizontally and vertically adjustable, tiltable by means of ball-and-socket joint, stainless steel.



## Arm rest 101.107

radiolucent plastic board, integral foam pad, antistatic, with attachment strap 101.356, stainless steel clamp, one-touch swivelling through 180° and horizontal as well as vertical adjustment, height adjustable, width 150 mm, length 600 mm.



## Arm/hand operating table 101.110

radiolucent plastic board with antistatic pad, cassette slot, length 700 mm, width 300 mm.



## Wristlet 101.121

with stainless steel clamp, washable and exchangeable Velcro strap



## Wristlet 101.122

to be attached to anaesthetic frame 101.143, washable and exchangeable Velcro strap, stainless steel



## Upper arm positioning plate 101.507

foam pad, 210 x 260 mm, radiolucent, height adjustable for approx. 100 mm by means of a clamp, swivelling through 90°, max. capacity: 10 kg. Requires attachment clamp 101.164



## Leg restraint strap 101.125

washable and exchangeable Velcro strap for leg fixation, suitable for leg sections 101.214 and 101.217



## Anaesthetic frame 101.142

stainless steel, with swivelling clamp 101.367, height adjustable, secured against turning around



## Body restraint strap 101.127

with stainless steel clamps, washable and exchangeable Velcro strap



## Anaesthetic frame extension 101.144 (pair)

for anaesthetic frame 101.142, swivelling, laterally adjustable, length 300 mm



## Infusion pole 101.145

with 4 hooks, height adjustable, attachment clamp with ball-and-socket joint, stainless steel.





**Upper arm positioning device  
101.508**

for intramedullary nailing of the upper arm, vertical rod and horizontal guidance with accessory rail, adjustable by means of ball-and-socket joint, for attachment of the Weinberger hand traction device 101.510 (to be ordered separately).  
Requires attachment clamp 101.367



**Countertraction post for upper arm  
101.509**

padded, radiolucent, max. capacity: 12 kg.  
Requires attachment clamp 101.367

**Weinberger hand traction device  
101.510**

radiolucent, for hand and finger traction, hand plate and finger holder of plastic material, max. capacity: 30 kg



**Leg support 101.229  
(one pair)**

height adjustable and swivelling from the foot end, servo-assisted, plastic support with gel pad for foot and lower leg, adjustable to all directions. Special attachment clamps already included.  
(Manufacturer: Amatech Corporation, USA)



**Leg support (Goepel type) 101.224  
(one piece)**

black integral foam pad, antistatic, with fastening strap, w/o clamp. Stainless steel 18/10, rod of 520 mm length. Please consider attachment clamp no. 101.161 or 101.367.

**Attachment clamp 101.161**

swivel type, with quick locking device, suitable for rods of 16 to 18 mm diameter, stainless steel



**Attachment clamp 101.366**

non-swivel type, suitable for rods of 16 to 18 mm diameter and square-section rods of 10 x 25 mm, stainless steel

**Attachment clamp 101.164**

same as 101.161, but non-swivel type and suitable for square-section rods 20 x 20 mm, stainless steel.



**Attachment clamp 101.367**

same as 101.161, but without quick locking device.

# Accessories for Operating Tables

**Pair of elbow rests 101.602**  
with stainless steel supports to match the uro. adaptor 101.601, antistatic pads (120 x 200 mm)



**Urological adaptor 101.601**  
to extend the seat section by approx. 420 mm, for urological surgery. X-ray permeable, with side rails 25 x 10 mm, of stainless steel.



**Gynaecological adaptor 101.401**  
(w/o ill.), to extend the seat section by 250 mm, for gynaecological and urological surgery. X-ray permeable, with side rails and cut-out for gynaecology.

**Urological adaptor with basin 101.605 in preparation**  
large and round basin, Ø 360 mm, of stainless steel 18/10, extensible, swivel-type. Version for greater hygiene without profile. Regulation of water inlet possible (technical details on request)



**Sieve 101.184**  
round, stainless steel, for basin 101.605

**Rinsing basin with attachment 101.240**  
Comfortable attachment on the base of the table. Quick locking for basin on the attachment device, safe screw attachment on the base, basin capacity 7 litres (set only suitable for mobilis OR-tables).



**Rinsing basin 101.247**  
attachment to table column with outlet and plastic hose, stainless steel

**Deep drain basin 101.600**  
on swivel mounted support, stainless steel, incl. clamp 101.166 for the attachment to the side rail.



**TUR sieve 101.242**  
stainless steel, for basin 101.600



**Foot switch 101.640**  
for OPX mobilis RC models only. Weld stainless steel housing, sealed against fluids, antiskid. To achieve following adjustments: up/down, Trendelenburg/Reverse Trendelenburg, with activating key, function key "Reverse-mode". To be plugged into the socket for the remote control. Upon request with additional socket. Setting of further positions upon request!

**Shoulder support (one pair)  
101.157**

including 2 clamps 101.164 and 2 antistatic pads as well as 2 attachment bars to adjust pads horizontally and vertically.



**Knee support 101.183**

for arthroscopy, attachment instead of leg plate (please consider divided leg plate), threaded spindle adjustment, antistatic pads, max. capacity: 25 kg.

**Lateral support (one piece)  
101.130**

simple version, including attachment clamp to side rail, smooth antistatic pad (100 x 215 mm).



**Knee positioning device 101.185**

manually adjustable, with gel pad and fastening strap. Side rail attachment (requires attachment clamp 101.367). Max. capacity: 25 kg.

**Rectoscopy/Buttocks support  
101.179**

laterally extensible for different table widths, smooth integral foam pad, for rectal positioning and spinal surgery. Please consider 2 clamps no. 101.161 or 101.367!



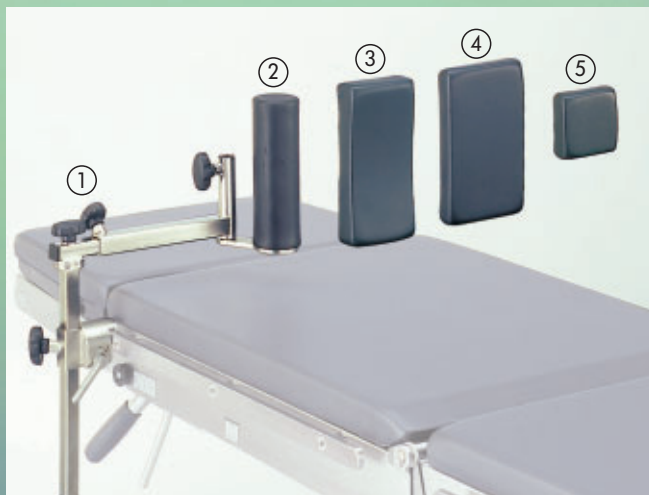
**Knee/foot rest 101.207**

for rectum and spinal surgeries with the patient in knee/elbow position, serves also as foot rest for laparoscopic surgery, including 2 clamps 101.366, attachment to standard leg plates of the mobilis OR-tables.

For OPX 125, please order similar version: **Knee/foot rest 101.208.**

**Bracket for body support 101.131**

(Ill. (1)) necessary for attaching body supports no. 101.132, 101.133 101.235 and 101.237. Enables double swivelling and horizontal as well as vertical adjustment of the supports, includes clamp 101.164



Body supports to be attached in combination with bracket 101.131 (please consider bracket plus supports):

**Body support roll 101.133**

(Ill. (2)), antistatic foam pad, 200 x 65 mm

**Shoulder/lateral support 101.132**

(Ill. (3)), concave foam pad, antistatic, 215 x 100 mm

**Back/buttock support 101.235**

(Ill. (4)), antistatic foam pad, 200 x 120 mm

**Pubis/sacrum/sternum support 101.237**

(Ill. (5)), antistatic foam pad, 85 x 85 mm

# Accessories for Operating Tables

## Universal adaptor 101.272

stainless, steel, necessary for attachment of universal basic unit 101.564 or connecting pieces 101.273 or 101.274 (not suitable for OPX 125)



## Shaped head rest 101.252

1 section rest, PU head rest with detachable pad and restraint strap, optimal pressure distribution in prone and supine position. Max. capacity: 15 kg. (requires connecting piece 101.273 or 101.274 and universal adaptor 101.272)



## Connecting piece 101.273

height adjustable and inclinable side rail adaptor, 240 mm long, suitable for head rests 101.252 or 101.253 (requires universal adaptor 101.272)

## Shaped head rest 101.253

2 section rest, adjustable in width, PU head rest with detachable pad and restraint strap, optimal pressure distribution in prone and supine position. Max. capacity: 15 kg. (requires connecting piece 101.273 or 101.274 and universal adaptor 101.272)



## Connecting piece 101.274

with central square receptacle; three-joint adjustment by means of star handles, with side rail adaptor, 275 mm long, suitable for head rests 101.252 or 101.253 (requires universal adaptor 101.272)

## Surgeon's arm rest 101.403

as hand support in case of microsurgical, ophthalmologic interventions. Height adjustable and reversible. Max. capacity: 10 kg. For attachment at connecting pieces 101.273 or 101.274



## Head ring 101.261

antistatic integral foam pad



## Cross-bar attachment 101.269

for sitting patient positioning in neurosurgery, adjustment for different table widths, stainless steel, please consider 2 clamps 101.161.

## Note:

The shaped head rests 101.252 or 101.253 are also suitable for OPX 125 models. (requires connecting piece 101.257)

**Doro Connecting piece 101.563**  
to adapt skull clamp 101.565 or head rest 101.568 to basic unit 101.564



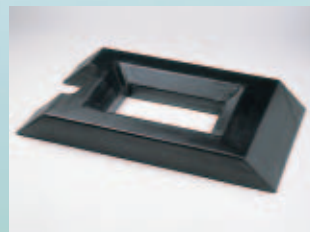
**Doro Skull Clamp 101.565**  
with 3 pins for adults

**Doro Universal basic unit 101.564**  
with double-joint adjustment, needs adaptor 101.272 (mobilis OR-tables only) or cross-bar attachment 191.269 (all tables)



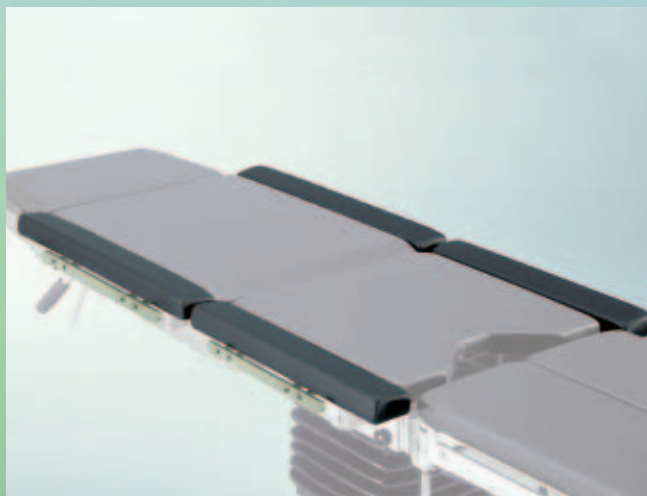
**Doro Shaped head rest 101.568**  
double-adjustment, U-shaped gel pads, requires connecting piece 101.563 and basic unit 101.564

**Cushion 101.188**  
semicircular, integral foam pad, 240 x 120 x 475 mm (W x H x L).



**Cushion 101.190**  
for operations on the intervertebral disc, dimensions: 840 x 460 x 100 mm, with head cut-out and abdominal cut-out (460 x 300 mm), antistatic

**Set of extension pads 101.400**  
lateral extension for obese patients as well as positionings where patients have to turn during intervention. Attachment to side rail. Set comprising 4 pads for seat and back section. With addit. side rails for accessories. Total width: 720 mm (for mobilis OR-tables only).



# Accessories for Operating Tables

## Shoulder arthroscopy plate 101.279

attachment instead of leg plate. Detachable lateral pads for free access to the shoulders, side rails. Please consider connecting piece 101.273 and shaped head rest 101.280 (mobilis OR-tables only)

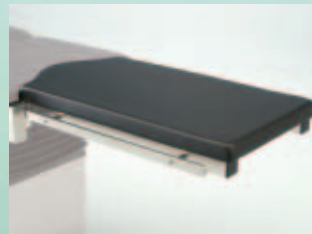


## Shoulder plate 101.278

attachment instead of leg plate, with side rails. Please consider connecting piece 101.274 and shaped head rest 101.252 (mobilis OR-tables only)

## Shaped head rest for shoulder operations 101.280

U-shaped helmet with soft pads and 2 fastening straps with Velcro fastener. Safe positioning and lateral fixation of the head while the patient is anesthetized. Adaptation to different head sizes; detachable pad. Max. capacity: 11 kg. Requires connecting piece 101.273 for the attachment to the shoulder arthroscopy plate 101.279



## Extension plate 101.290

for paediatric surgery, attachment to the seat section, stainless steel frame, with side rails. Antistatic pad of 700 x 400 mm. Non-adjustable (for mobilis OR-tables only)

## Carbon bar 101.295

fixed to the back section, X-ray permeable (for mobilis OR-tables only)



## Rack for accessories 101.285

square-section tubular steel frame with 5 rails for attachment of accessories and 1 basket, stainless steel, antistatic castors, overall dimensions: 1430 mm height, 630 mm wide, 580 deep (w/o accessories).

## Cassette carrier 101.281

for X-ray cassette of max. 350 x 430 mm, telescopic insertion bar of stainless steel.



# Radiolucent Carbon Accessories for Operating Tables



## Special leg plates 101.705

divided into two parts, with radiolucent, carbon fiber reinforced plastic plate, attached at seat section of mobilis OR-tables

- length: 850 mm (730 mm is of radiolucent material), an extension of 250 mm is possible by insertion of laminated plates
- width: 2 x 250 mm
- load capacity: 30 kg ea.
- inclination and spread by means of interlocking system and clamping levers
- upholstery: 50 mm thick, antistatic foam pad



## Shoulder-cervical spine plate 101.710

with radiolucent, carbon fibre reinforced plastic plate, attached at seat section of mobilis OR-tables

- dimensions: 950 x 535 mm (640 mm is of radiolucent material)
- cone shaped design
- for patients of up to 135 kg weight only
- inclination adjustment upwards by 60°, pneumatic spring supported
- release of the pneumatic springs by hand lever at the lower end of the cervical spine plate
- upholstery: 30 mm thick, antistatic foam pad

## Cardio-endo plate 101.715

with radiolucent, carbon fibre reinforced plastic plate, with mounting pieces for adaptation to seat section of mobilis OR-tables

- dimensions: 1,400 x 520 mm
- bar situated at the head end of plate (as stabilizer)
- detachable bar
- load capacity: up to 100 kg (unsupported), up to 185 kg (supported)
- optional: detachable side rails for long sides
- upholstery: 40 mm thick, antistatic foam pad



## Side rail 101.735

300 mm long, fixed to the cardio-endo plate



## Special arm rest 101.720

with radiolucent, carbon fibre reinforced plastic plate, fixation at side rail of mobilis OR-tables

- dimensions: 700 x 250 mm (600 mm is of radiolucent material)
- load capacity: up to 25 kg
- horizontally adjustable, interlocking system and handwheel
- upholstery: 25 mm thick, antistatic foam pad



# OPX Extension Device



For all kind of fractures of the lower limbs.

Essential features:

- Fast, simple and secure attaching of the device to all Schmitz Operating Tables
- Unobstructed access for X-ray amplifier and complete transillumination at two levels for the lower limbs
- Well-devised accessories for comfortable and precise positioning of the patient
- Desinfectant-proof stainless-steel construction

## Extension device 101.521

With adaptor as junction to the operating table, positioning plate and countertraction post, extension bar with positive double joints for swinging in/out and height adjustment. Optimal access for X-ray amplifier by horizontal or vertical joints. Adjustable traction units are directly mounted on extension bars; tilting, swivelling and rotation joint. All metal parts are in stainless steel, electro-polished. Including rack to support extension device in case of non-use. (Please consider receptacle 101.525. Not required for L models.)

## Pad 101.530

for the positioning plate situated at the top of the extension device (used for OR-tables w/o longitudinal displacement of table top, L models)

## Pad 101.531

for the positioning plate situated at the top of the extension device (used for OR-tables with longitudinal displacement of table top, L models)

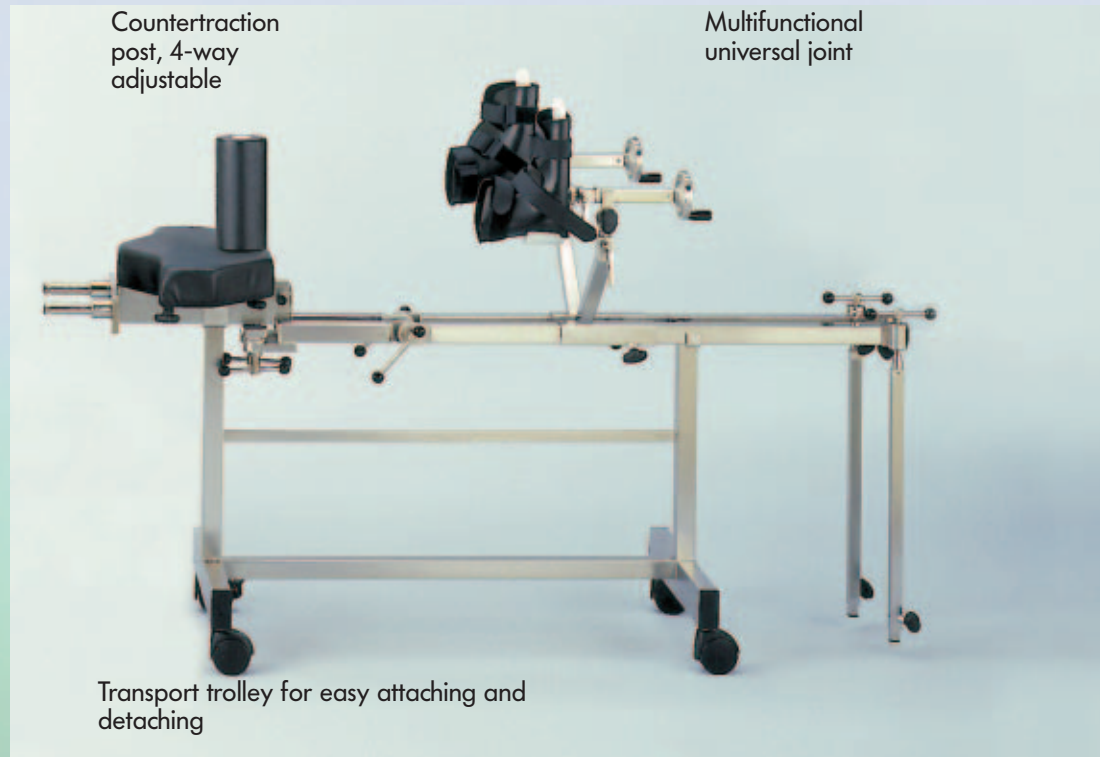
## Complete with basic accessories:

- 2 extension bar supports,
  - 2 foot plates for adults,
  - 2 traction boots for adults,
  - 1 leg plate,
  - 1 countertraction post for dorsal position,
  - 1 transport trolley for the extension device
- Weight without transport trolley: 34 kg

## Receptacle 101.525

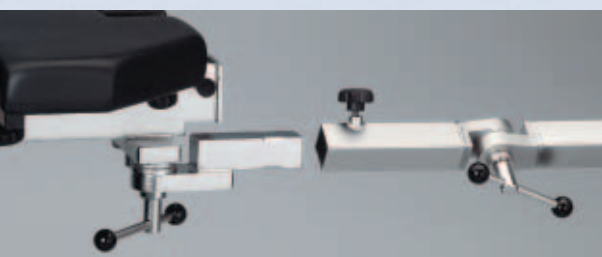
for extension device 101.521, designed for mobilis OR-tables except L models. L models are generally equipped with corresponding receptacle.

**For OPX 125, please order similar version:  
Extension device 101.516**





**Basic accessories**



**Extension bar (horizontal or vertical insertion)**



**Horizontal swinging of extension bars**



**Vertical adjustment of extension bar by turning it into the vertical direction**



**Countertraction post for dorsal position**



**Leg plate**

**Additional accessories**



**Pelvis plaster aggregate with pelvis rod 101.238**



**Kirschner wire device 101.506 with traction clamp for Kirschner wire extension**



**Countertraction post for lateral position 101.545**



**Basket for accessories 101.234**



**Traction device for the lower leg 101.540**  
countertraction post for lower leg, height adjustable and detachable. Can also be tilted by means of a toothed swivel joint. Traction device, height adjustable, with tilting joint and foot plate



**Side rail extension 101.547 (one pair)**  
situated at the pelvic section, for fixation of a Goepel leg support 101.224 by means of attachment clamp 101.367  
**w/o ill.:**  
**2 foot plates for children 101.503**  
**2 traction boots for children 101.504**

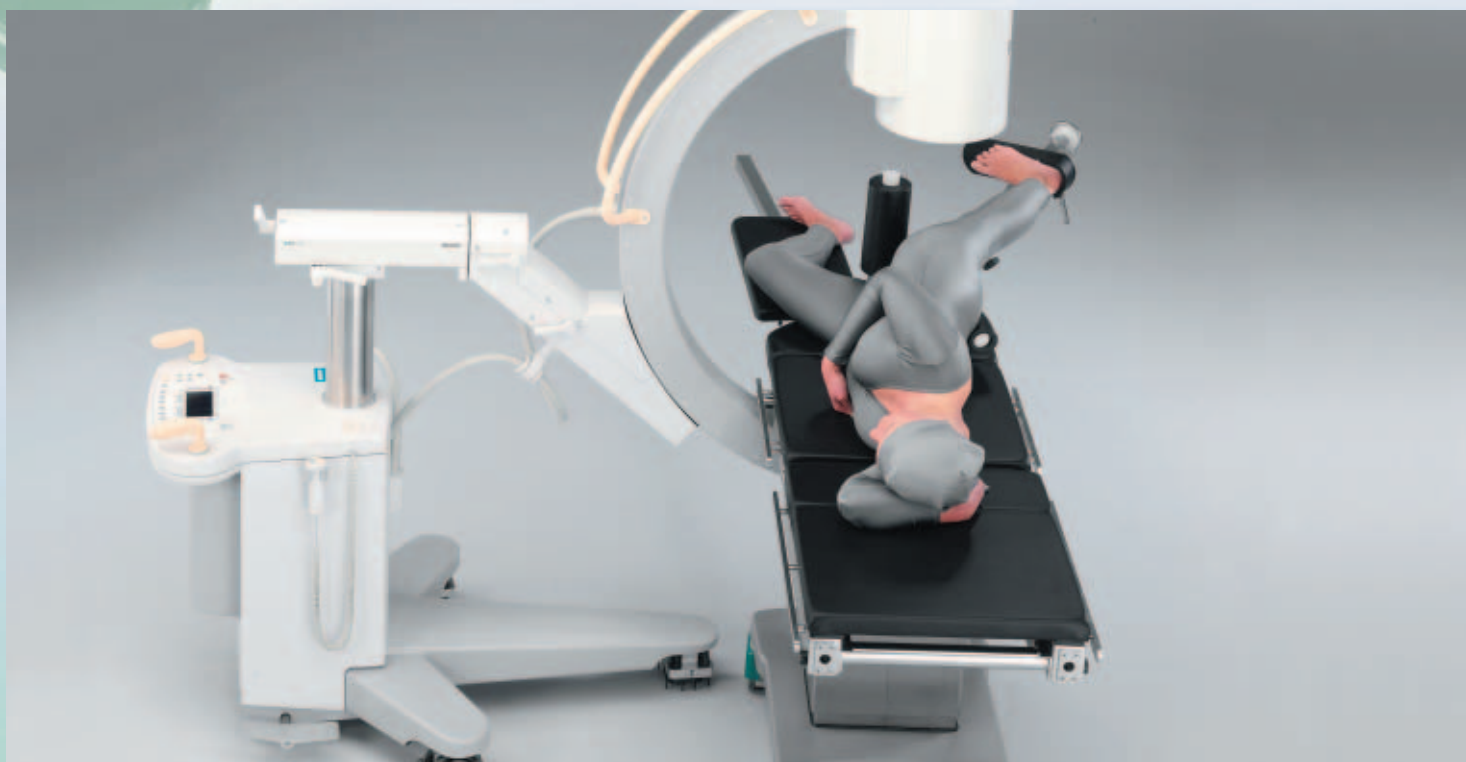
# OPX Extension Device



Fractures of the femur



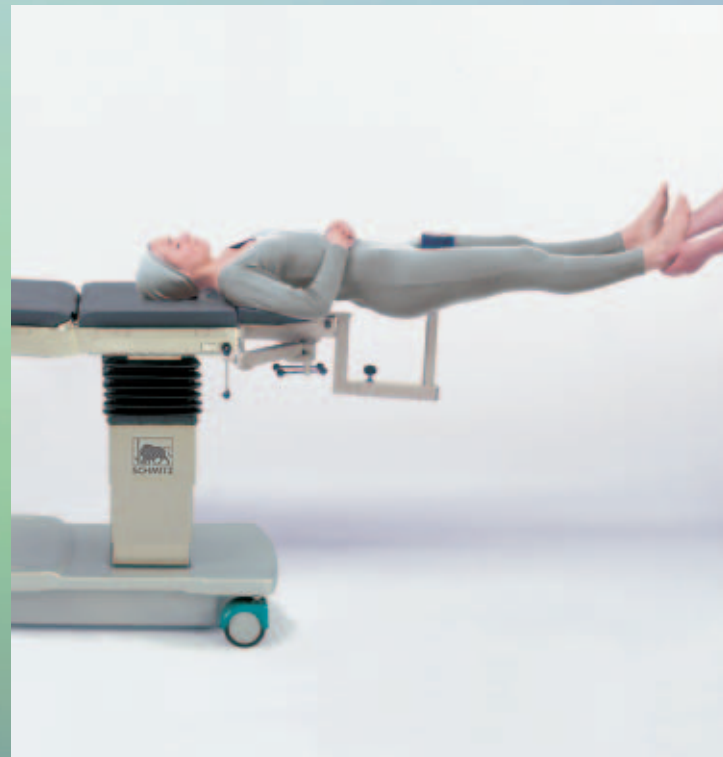
Fractures of the neck of the femur



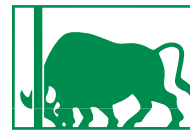
Fractures of the femur in lateral position with supracondylar wire extension



Fractures of the lower legs



Treatment of pelvis plaster cast



**SCHMITZ**

Schmitz u. Söhne GmbH & Co. KG  
Postfach 14 61, 58734 Wickede (Ruhr)  
Germany (postal address)  
Zum Ostenfeld 29, 58739 Wickede (Ruhr)  
Germany (visiting address)  
Phone +49 (0) 2377-84-0  
Fax +49 (0) 2377-84-135  
www.schmitz-soehne.de  
export@schmitz-soehne.de

Technical service, hotline:  
Phone +49 (0) 2377 84549  
Fax +49 (0) 2377 84210  
service@schmitz-soehne.de

**Schmitz abroad:  
Switzerland**

SCHMITZ AG  
Schloss-Strasse 67  
8207 Schaffhausen  
Phone +41 (0) 52 6 43 25 05  
Fax +41 (0) 52 6 43 26 91  
f.poncet@bluewin.ch

SCHMITZ AG  
Francois Poncet  
Chemin de Bois 32  
1020 Renens VD  
Phone +41 (0) 21 6 91 74 66  
Fax +41 (0) 21 6 91 74 62  
Mobile 079-2128334  
f.poncet@bluewin.ch

**Spain**

SCHMITZ u. Söhne Ibérica S.L.  
Centro de Negocios Tartessos  
Edificio Artemisa  
C/Pollensa, nº 2 - Oficina 3  
28290 Las Rozas (Madrid)  
Phone +34 (0) 91 6 40 45 14  
Fax +34 (0) 91 6 36 63 05  
schmitz@schmitz.es

**Italy**

SCHMITZ ITALIA S.R.L.  
Daniela Capeletti  
Via Gilardini 2  
15076 Ovada (AL)  
Phone +39 (01 43) 8 03 50  
Fax +39 (01 43) 83 42 53  
Mobile 349-6338723  
info@schmitz-italia.it  
www.schmitz-italia.it

**France**

Sarl Schmitz France  
Za du Serroir nº 2  
54690 Lay Saint Christophe  
Phone +33 (0) 3 83 22 94 67  
Fax +33 (0) 3 83 22 82 28  
info@schmitz-france.fr

**Russia and Eastern Europe**

Schmitz u. Söhne GmbH & Co. KG  
Sergey Kosolapov  
Bornaische Str. 180  
04279 Leipzig  
Germany  
Phone +49 (0) 3 41 3 37 80 34  
Fax +49 (0) 3 41 3 37 80 35  
Mobil +49 (0) 1 72 9 96 40 71  
kosolapov@t-online.de

**China**

Schmitz u. Söhne GmbH & Co. KG  
Guangzhou Representative Office  
World Trade Centre,  
North Tower 3105  
Huan Shi East Road 371-375  
Guangzhou 510095  
Phone +86 (0) 20 87 61 33 01  
Fax +86 (0) 20 87 60 39 23  
info@schmitz-soehne.cn

All articles including corresponding accessories marked with the CE label meet the standards for medical devices acc. to MPG resp. acc. to the EC regulation 93/42/EEC.



The products may only be used for their intended purpose of use. Please also observe our operating manual!



The company reserves the right to alter the design, construction, dimensions and finish of its products without notice. All relevant dimensions and weights are quoted as approximate information/ date. Due to technical reasons minor colour deviations are possible. Schmitz Catalogue No. 60, 03.2007 E

**The complete  
Schmitz-products range:**



Gynaecology, Urology and Proctology  
The perfect equipment to meet all requirements



varimed®  
Special trolleys customized for hospital requirements



OPX Operating Tables for Outpatient Departments and Operating Theatres  
Unique Flexibility and Reliability



varimed®  
Furniture for OR-theatres and outpatient departments



STL 285, STS 282, STX 280  
The Patient Transport Systems for Emergencies, Outpatient Depts, Intensive Care and X-Ray – the way forward!



varimed®  
Medical Furniture for Examination and Treatment Areas



Partura®  
The Schmitz delivery table for a safe and gentle birth